

## The Invasive Bradford Pear Tree

The Bradford Pear tree, once considered a promising new ornamental, is now considered by arborists a regrettable choice for the landscape. When left unattended, the devastating effects from the Bradford Pear's invasive nature can choke out our area's native trees and wildflowers. In addition, these short-lived trees develop weak branching unions that make them susceptible to major limb breakage. Limbs tend to break at the trunk, leaving a gaping wound the tree can't recover from. Liberty Utilities – Empire District promotes the “Right Tree in the Right Place” philosophy, considering all Bradford Pear trees in the vicinity of our conductors a candidate for removal. Please consider this information before planting a Bradford Pear tree.



## DO YOU HAVE TREE QUESTIONS?

### Safe, Reliable Service

Liberty Utilities – Empire District personnel and contractors work year round to prevent tree-related outages. Our vegetation management program includes inspection and maintenance of over 7,000 miles of electric lines and equipment. Since 2005, we've reduced tree-related outages by 85 percent. Regardless of the season, our forestry professionals are working to ensure safe, reliable energy and service every day.

We have answers.

Watch our Facebook page  
for information on future  
Tree Giveaway events.



**Liberty Utilities®**  
EMPIRE DISTRICT

Learn more at  
[www.empiredistrict.com/vegetation](http://www.empiredistrict.com/vegetation)



**Liberty Utilities®**  
EMPIRE DISTRICT



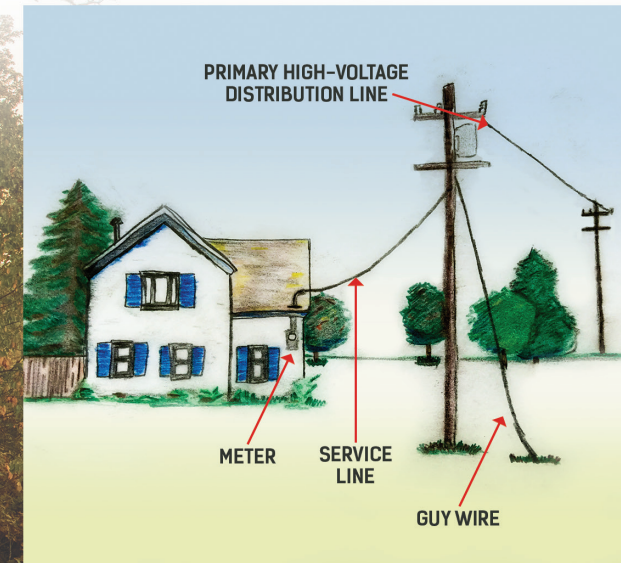


## Do you have tree questions? We have answers.

Staying connected is important to you, and it's important to us too. When you call our Contact Center 1-800-206-2300 with a tree related concern, we may need to ask you several clarifying questions.

- What is your service address/location of concern?
- Do you have power?
- Are your lights flickering?
- Is a tree limb burning or causing an electrical arc?
- Does the situation involve:
  - Your service line (line from pole to house), or
  - The primary or high-voltage line (line from pole to pole)?

Your responses and observations help determine the best course of action. A certified arborist or forestry professional will address your concerns within five business days.



**Liberty Utilities®**  
EMPIRE DISTRICT

## Common Questions

### Will Liberty Utilities – Empire District trim/remove trees that are near the service line to my home?

Liberty Utilities – Empire District is responsible for routine trimming around our high-voltage lines. This ensures continued reliable service for our customers. Property owners are in control of the trimming of trees near the low-voltage service line to their home or business. Many customers choose to remove these trees to reduce the risk of tree damage to their home, business or service line. We will work with your contractor to make sure the area is safe to perform trimming or removal. Contact us at least 72 hours in advance for a temporary disconnect of your service line. When your work is complete, we will reconnect the line.

### Can I trim my own trees?

High-voltage power lines can be deadly. You can trim your own trees, but you must keep safety restrictions in mind. Only certified tree trimmers can work within 10 feet of high-voltage lines. If you've determined your work is well outside the 10-foot threshold, you must also consider the potential for a tree or limb to come into contact with a high-voltage line when it falls. Ladders and other equipment must be positioned to avoid the 10-foot threshold as well. If a tree or limb could fall into a line, please call us. We will send a forestry professional to assess what safety measures can be taken.

**The Right Tree in the Right Place** You can help reduce power outages and blinks for you and your neighbors by selecting the right tree and planting it in the right place.